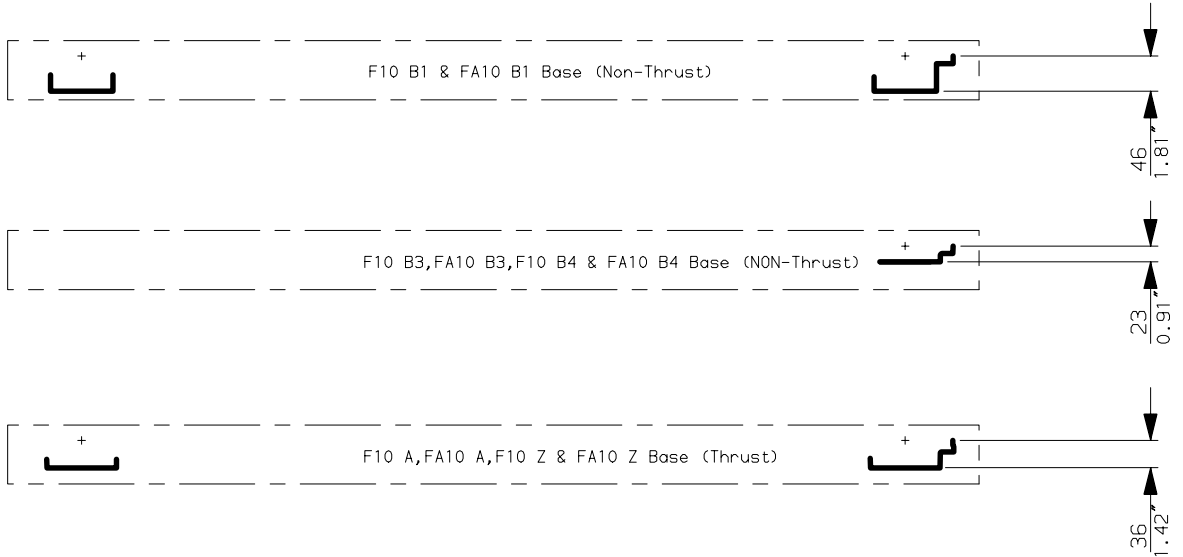
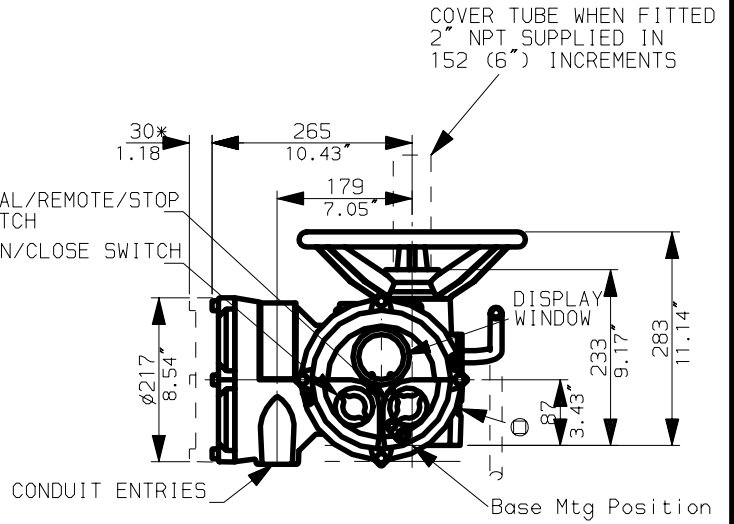
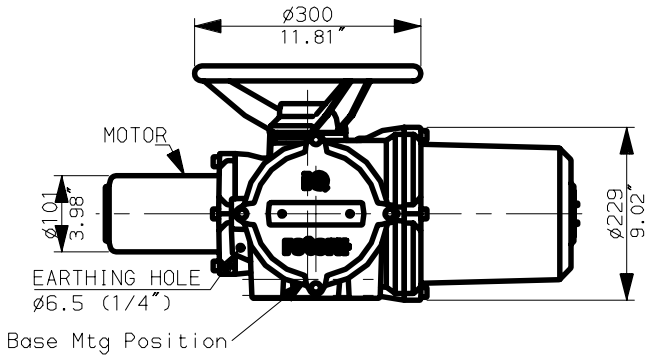
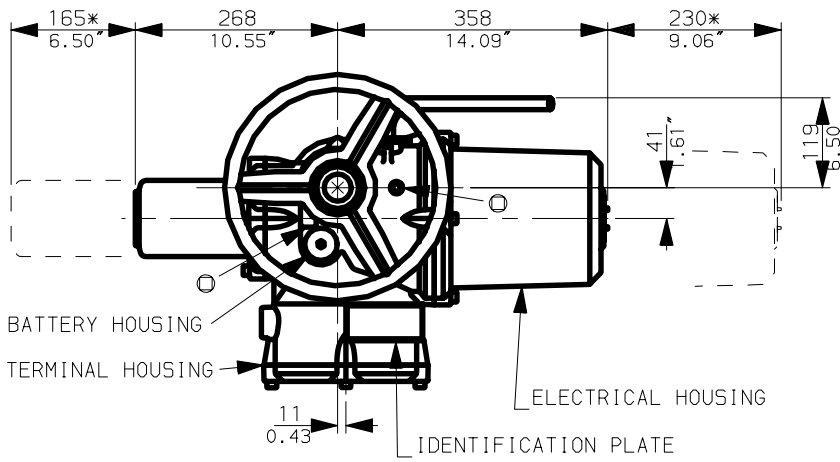
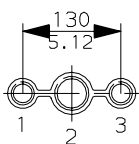


IQ10-18 WITH  
STANDARD HANDWHEEL



**CONDUIT ENTRIES**



Nos.1 & 3 TAPPED 1" NPT  
No.2 TAPPED 1 1/2" NPT  
STANDARD ALTERNATIVES IF SPECIFIED  
2 X M25, 1 X M40  
2 X PG16, 1 X PG29

NOTES

Three BASE options are detailed to suit the relevant Coupling arrangement. The required BASE for the SIDE & END views should be loaded to position indicated. (The left hand view of the B3 and B4 bases cannot be seen due to the conduit entries).

**rotork**  
**IQ10 (THW) DATA**  
Date 300301 Scale 1:10